

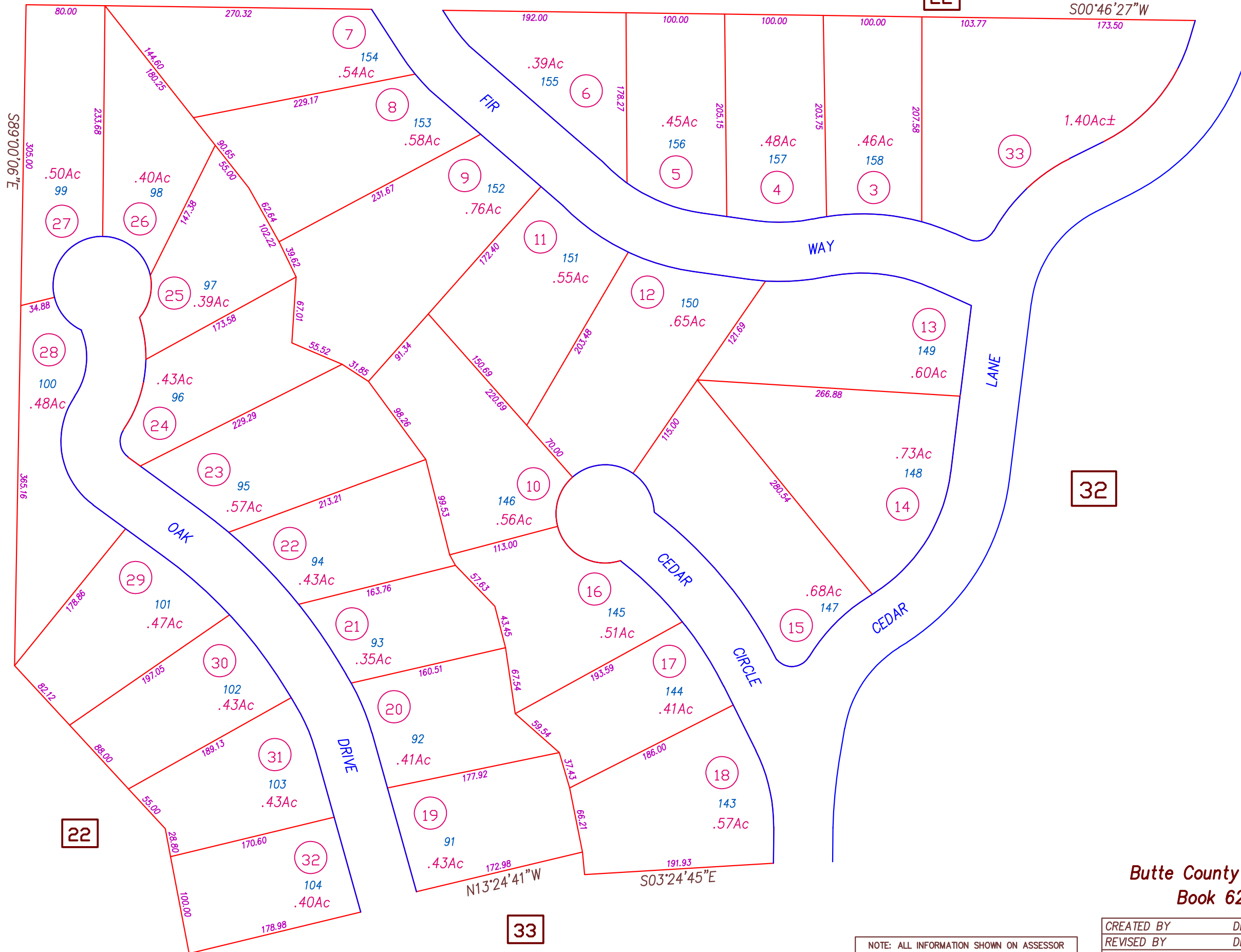


11

32

22

33



PONDEROSA PINES SUB., 30 M.O.R. 2/3, 03-04-1963

NOTE: ALL INFORMATION SHOWN ON ASSESSOR PARCEL MAPS ARE FOR ASSESSOR'S OFFICE USE AND DO NOT NECESSARILY CONSTITUTE LEGAL LOTS. NO LIABILITY IS ASSUMED FOR THE ACCURACY OF THE DATA SHOWN.

Butte County Assessor's Map Book 62, Page 31

CREATED BY	DB	CREATED ON	7-27-2004
REVISED BY	DB	REVISED ON	08-27-2004
FILE NAME	62-31	EFFECTIVE	2005-06 ROLL
All acreages approximate.			
Compiled By The Butte County Assessor's Office			